



# WILLOWS NEWS



Date: 30.01.2026

Tel: 020 8841 7176

[www.thewillowsschoolacademy.co.uk](http://www.thewillowsschoolacademy.co.uk)

Dear Parents and Carers,

What a wonderful morning we had yesterday celebrating National Puzzle Day at The Willows. The turnout from parents and carers was truly fantastic. It was heart-warming to see so many of you working alongside your children, sharing in the fun and challenge of the activities. The children absolutely loved having you with them. A huge thank you to Mrs Downie and her team of helpers for organising such an engaging and joyful event.

With just two weeks to go before half term, there is still plenty happening across the school. Please note, after half term, our new lunch menus will come into effect, and these are now available to view on the school website.

We have also been reminding pupils about our uniform expectations, and it has been lovely to see two classes this week enjoying a Pizza lunch as a reward for consistently turning out in their full school uniform. Thank you for your continued support in ensuring children arrive each day in full uniform, including school shoes.

Our outdoor soft-play unit is now officially ready for use, and the children will be able to explore it during lessons and morning play, next week. It will be a fantastic addition to our outdoor provision.

Have a lovely weekend.

Best wishes

The Willows Team

## Ash Class - RE

Ash class this week...

Ash class have been exploring the Hindu belief that *God is in everything and everywhere.*

The children were invited to empty a sachet of salt into a cup of water, then to think about where is the salt?

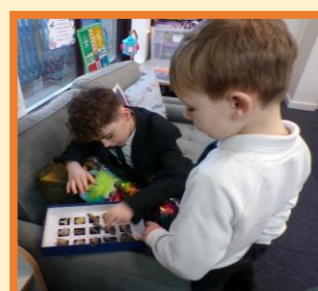
Is it still there even though we cannot see it?



## Chestnut - Science

In Science, Chestnut Class became archaeologists, uncovering and identifying real fossils. The children learned that fossils are usually found in sedimentary rock because it forms in gentle layers that can preserve plants and animals.

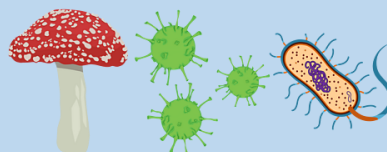
They also explored how fossils are made, sequencing the stages from a living thing being buried by sediment to its remains slowly turning to stone over millions of years.



## Beech Class - Maths

### Adding Mixed Numbers

$$3\frac{5}{7} + 2\frac{8}{9}$$



Another fantastic week of learning in Beech class. We have been continuing our learning of Danny Chung does not do maths as well as working on our reading comprehension. In Maths we have been revising over our fractions work and becoming more flexible at adding, subtracting fractions, improper fractions and mixed numbers. In science we have focused on microorganisms and in Geography we continued our research of the Amazon rainforest. PSHE saw the class explore what they would like to achieve as a goal for life and at the end of year 6.



## Elm Class - Maths

This week in Elm Class the children sat in a group for maths to count blocks using a scale, to visually see if the amount was more than, less than or equal to.

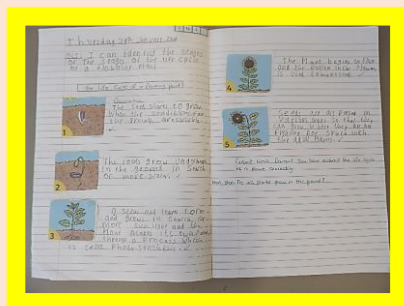
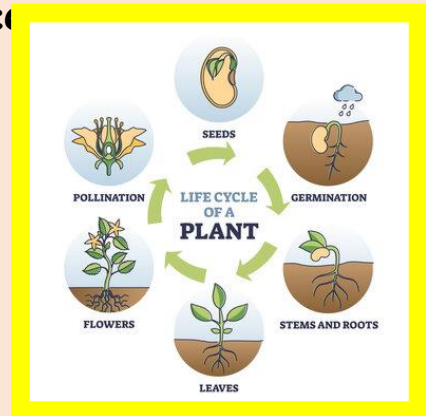
The children were able to take turns and count together as each block was placed on the scale.

The teacher also asked the children to count how many blocks were in each side and how many needed to be added to make the scale balance.



## Pine Class - Science

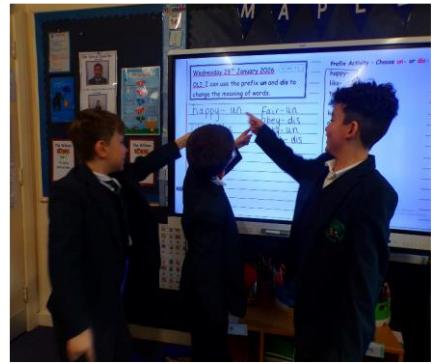
This week, Pine Class turned into budding scientists to investigate the fascinating life cycle of flowering plants. Did you know that every tiny seed contains its own food store and an embryo ready to "wake up" through germination? From attracting pollinators to forming new seeds, the students loved discovering how these plants sustain our entire ecosystem.



## Maple - Geography

This week in English, Maple Class explored \*prefixes\*\*and learned how adding \*un-\* and \*dis-\*\*to the beginning of words can change their meaning. The children were highly engaged and enjoyed taking part in interactive activities, including coming up to the board to choose the correct prefix for different words.

They showed great enthusiasm, confidence, and teamwork, and were keen to explain their thinking to the class. It was lovely to see such active participation and growing understanding of word meanings.



## Hazel Class - Literacy

Excellent engagement and interest from Hazel class whilst exploring musical instruments and sound, this week.

Thank you to Mr Sam Leo for your kind and patient instruction during this interactive session.



## Oak - Geography

Yesterday, we had a lovely morning during our speaking and listening session with a puzzle focus. We solved a lot of puzzles with our peers in the class and had fun joining our parents/carers in the school hall to celebrate National Puzzle Day.

A big thank you to all the parents who turned up. Oak has been doing some terrific learning as well.




WORD  
of the  
WEEK

**reluctant**

unenthusiastic  
or hesitant

e.g. My grandad was reluctant  
to use the new computer.



twinkl  
www.twinkl.co.uk



The Willows School  
Academy Trust

Learning - Achieving - Succeeding

## Coffee Morning

### International Puzzle Day Celebration

To celebrate International Puzzle Day, we were delighted to welcome parents and carers into school to enjoy a puzzle-building session with their child. It was lovely to see such a great turnout, with families playing, chatting, and having fun together.

Parents and Carers were able to have quality time with their child as well as have the chance to engage positively with other pupils. The mood was relaxed and joyful, and it was wonderful to see children involved.

We also held a raffle, with one lucky parent taking home a fantastic Nike hamper!

Parents and carers shared very positive feedback, including:  
*"Well organised event - useful to build the link between home and school,"*

*"Lovely to do something fun at school with my son,"* and  
*"Great interaction with other parents and children."*

Thank you to everyone who attended and helped make the day such a success — we really enjoyed seeing so many families spending quality time together.

